



**HONEY**  
**LAND**

**harmony of naturalness and quality**

**OUTDOOR PLAYGROUND EQUIPMENT  
AND MUSICAL INSTRUMENTS MADE  
OF WOOD AND METAL**



**FaDOKTOR**



**EQUIPMENT COMBINATIONS**



**CLIMBING FRAMES**



**SWINGS**



**ROPEWAY**



**SEESAW, SANDBOX,  
SOCCER SPRING RIDERS**



**MUSICAL INSTRUMENTS**

## ABOUT US

The engineering company Fadoktor Mérnöki Iroda Kft. has been dealing with wood protection, playground, sports and fitness equipment, design and construction of playgrounds and sports fields since 2000. Thanks to our more than 20 years of experience, we have expanded our product range with **HONEYLAND** playground equipment and outdoor musical instruments of our own design and construction, based on a thorough knowledge of our customers' needs.

When developing our own range, we have paid particular attention to creating a safe and entertaining environment where children can have fun and adventure with our outdoor play equipment.

**HONEYLAND**'s individual products combine well with each other and the materials used, acacia wood and metal, offer a natural and durable solution.

Our playground equipment contributes to the development of children's motor skills, including coordination and balance. Outdoor musical instruments have a positive impact on children's creativity, sense of rhythm and fine motor skills.

Our **HONEYLAND** toys are suitable for communities, crèches, kindergartens, schools, forestry operations, national parks and tourist centers.

## OUR COMPLEMENTARY SERVICES:

- preliminary advice,
- on-site survey,
- delivery of play equipment,
- on-site installation,
- installation of rubber flooring.



**Honey  
Land**



## HL-T-202301 DOBÓ tower

**Fall height** 1,50 m

### Used materials

- sapwood milled, surface-treated acacia beams
- hot-dip galvanised steel bases
- HDPE plastic parapet plate and roof sheets
- fiberglass reinforced plastic slide

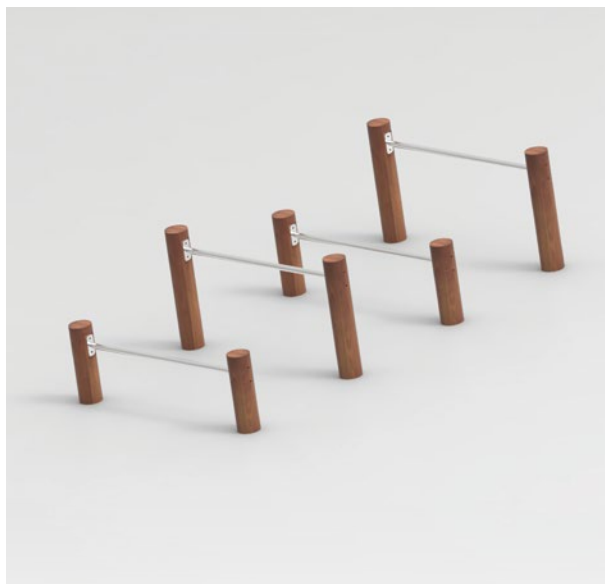


## HL-T-202302 Keer tower

**Fall height** 1,50 m

### Used materials

- sapwood milled, surface-treated acacia beams
- hot-dip galvanised steel bases
- HDPE plastic parapet plate and roof sheets
- fiberglass reinforced plastic slide
- steel core wire rope



## HL-A-202301 Steeplechase

<b>Fall height</b>	0,59 m
<b>Equipment dimensions</b>	1298 × 2685 mm
<b>Fall zone</b>	5555 × 4168 mm

### Used materials

- sapwood milled, surface-treated acacia beams
- stainless steel



## HL-A-202302 Balance beam

<b>Fall height</b>	0,3 m
<b>Equipment dimensions</b>	1600 × 130 mm
<b>Fall zone</b>	4618 × 3000 mm

### Used materials

- sapwood milled, surface-treated acacia beams





## HL-A-202303 Spring balance beam

<b>Fall height</b>	0,66 m
<b>Equipment dimensions</b>	2500 × 210 mm
<b>Fall zone</b>	5500 × 3000 mm

### Used materials

- sapwood milled, surface-treated acacia beam
- steel springs



## HL-A-202304 Laying horizontal ladder

<b>Fall height</b>	0,26 m
<b>Equipment dimensions</b>	1618 × 933 mm
<b>Fall zone</b>	4618 × 3500 mm

### Used materials

- sapwood milled, surface-treated acacia beams



## HL-A-202305

### Steps

<b>Fall height</b>	0,25 m
<b>Equipment dimensions</b>	1592 × 450 mm
<b>Fall zone</b>	4462 × 3318 mm

#### Used materials

- sapwood milled, surface-treated acacia beams



## HL-A-202306

### Column forest

<b>Fall height</b>	0,25 m
<b>Equipment dimensions</b>	1732 × 1660 mm
<b>Fall zone</b>	4602 × 4530 mm

#### Used materials

- sapwood milled, surface-treated acacia beams





## HL-A-202307 Steeplechase

<b>Fall height</b>	0,66 m
<b>Equipment dimensions</b>	2595 × 1500 mm
<b>Fall zone</b>	5464 × 4500 mm

### Used materials

- sapwood milled, surface-treated acacia beams



## HL-A-202308 Column side steps

<b>Fall height</b>	0,29 m
<b>Equipment dimensions</b>	2256 × 1353 mm
<b>Fall zone</b>	5088 × 3387 mm

### Used materials

- sapwood milled, surface-treated acacia beams





## HL-F-202302 Monty climbing frame

<b>Fall height</b>	2,20 m
<b>Equipment dimensions</b>	2466 × 1809 mm
<b>Fall zone</b>	5466 × 4890 mm

### Used materials

- sapwood milled, surface-treated acacia beams
- stainless steel



## HL-F-202303 Swedish ladder

<b>Fall height</b>	2,27 m
<b>Equipment dimensions</b>	2000 × 130 mm
<b>Fall zone</b>	5000 × 3000 mm

### Used materials

- sapwood milled, surface-treated acacia beams
- stainless steel





## HL-F-202304 Parallel bars

<b>Fall height</b>	1,24 m
<b>Equipment dimensions</b>	3848 × 830 mm
<b>Fall zone</b>	6810 × 3700 mm

### Used materials

- sapwood milled, surface-treated acacia beams
- stainless steel



## HL-F-202305 Column pyramid

<b>Fall height</b>	0,86 m
<b>Equipment dimensions</b>	3470 × 3180 mm
<b>Fall zone</b>	6400 × 6145 mm

### Used materials

- sapwood milled, surface-treated acacia beams



## HL-F-202306

### Horizontal ladder

<b>Fall height</b>	1,66 m
<b>Equipment dimensions</b>	2590 × 930 mm
<b>Fall zone</b>	5410 × 3800 mm

#### Used materials

- sapwood milled, surface-treated acacia beams
- stainless steel



## HL-F-202307

### Climbing column

<b>Fall height</b>	1,3 m
<b>Equipment dimensions</b>	130 × 130 mm
<b>Fall zone</b>	3130 × 3130 mm

#### Used materials

- sapwood milled, surface-treated acacia beam





## HL-F-202308

### Climb through tunnel

<b>Fall height</b>	0,1 m
<b>Equipment dimensions</b>	2030 × 1200 mm
<b>Fall zone</b>	4900 × 4070 mm

#### Used materials

- sapwood milled, surface-treated acacia beams
- HDPE plastic, fibreglass tunnel





## HL-H-202301 EDDY swing stand

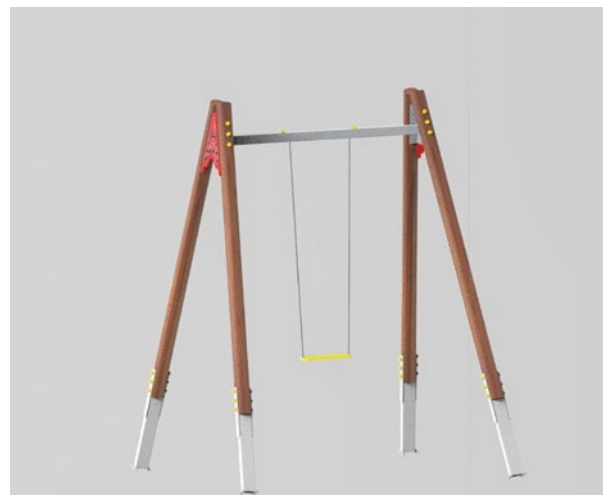
**Fall height** 1,38 m

**Equipment dimensions** 3150 × 2898 mm

**Fall zone** 7800 × 3100 mm

### Used materials

- sapwood milled, surface-treated acacia beams
- hot-dip galvanized steel bases
- hot-dip galvanized steel top beam
- HDPE plastic decorative sheets



## HL-H-202302 Swing stand

**Fall height** 1,38 m

**Equipment dimensions** 2898 × 2517 mm

**Fall zone** 7800 × 1770 mm

### Used materials

- sapwood milled, surface-treated acacia beams
- hot-dip galvanized steel bases
- hot-dip galvanized steel top beam
- HDPE plastic decorative sheets



### HL-H-202304 Baby seat swing stand

<b>Fall height</b>	0,92 m
<b>Equipment dimensions</b>	1760 × 250 mm
<b>Fall zone</b>	4630 × 3000 mm

**Used materials**

- sapwood milled, surface-treated acacia beams
- hot-dip galvanised steel bases
- baby seat



### HL-H-202305 Nest seat swing stand

<b>Fall height</b>	0,92 m
<b>Equipment dimensions</b>	2510 × 1000 mm
<b>Fall zone</b>	5380 × 3000 mm

**Used materials**

- sapwood milled, surface-treated acacia beams
- hot-dip galvanised steel bases
- nest seat





## HL-H-202306 Combined nest swing stand

<b>Fall height</b>	0,92 m
<b>Equipment dimensions</b>	4140 × 1000 mm
<b>Fall zone</b>	7010 × 3000 mm

### Used materials

- sapwood-free, surface-treated acacia beams
- hot-dip galvanised steel bases
- nest seat
- baby seat



## HL-H-202401 Swing stand with two seats

<b>Fall height</b>	1,38 m
<b>Equipment dimensions</b>	3620 × 2380 mm
<b>Fall zone</b>	7800 × 3020 mm

### Used materials

- 80×80 mm rectangular hollow section columns
- hot-dip galvanised steel bases
- hot-dip galvanised steel top beam
- HDPE plastic decorative sheets



## HL-H-202402 Swing stand with one seat

<b>fall height</b>	1,38 m
<b>Equipment dimensions</b>	2380 × 2380 mm
<b>fall zone</b>	7800 × 1770 mm

### Used materials

- 80×80 mm rectangular hollow section columns
- hot-dip galvanised steel bases
- hot-dip galvanised steel top beam
- HDPE plastic decorative sheets



## HL-H-202403 Swing stand with three seats

<b>fall height</b>	1,38 m
<b>Equipment dimensions</b>	5310 × 2380 mm
<b>fall zone</b>	7800 × 4970 mm

### Used materials

- 80×80 mm rectangular hollow section columns
- hot-dip galvanised steel bases
- hot-dip galvanised steel top beam
- HDPE plastic decorative sheets





## HL-H-202404

### Swing stand with four seats

<b>Fall height</b>	1,38 m
<b>Equipment dimensions</b>	6600 × 2380 mm
<b>Fall zone</b>	7800 × 6140 mm

#### Used materials

- 80×80 mm rectangular hollow section columns
- hot-dip galvanised steel bases
- hot-dip galvanised steel top beam
- HDPE plastic decorative sheets



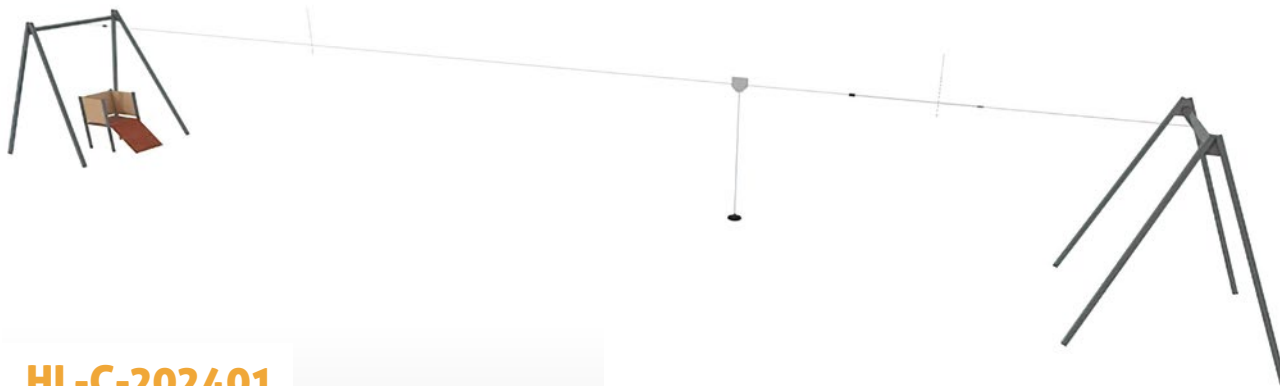
## HL-H-202303

### Hammock

<b>Fall height</b>	0,6 m
<b>Equipment dimensions</b>	2760 × 1000 mm
<b>Fall zone</b>	5630 × 3000 mm

#### Used materials

- sapwood milled, surface-treated acacia beams
- hammock structure



## HL-C-202401

### Wire rope cable way

<b>Fall height</b>	1,31 m
<b>Equipment dimensions</b>	28050 × 3100 mm
<b>Fall zone</b>	31050 × 4000 mm

#### Used materials

- hot-dip galvanised powder-coated steel columns and horizontal beams
- non-slip plywood starter podium
- HDPE plastic barriers



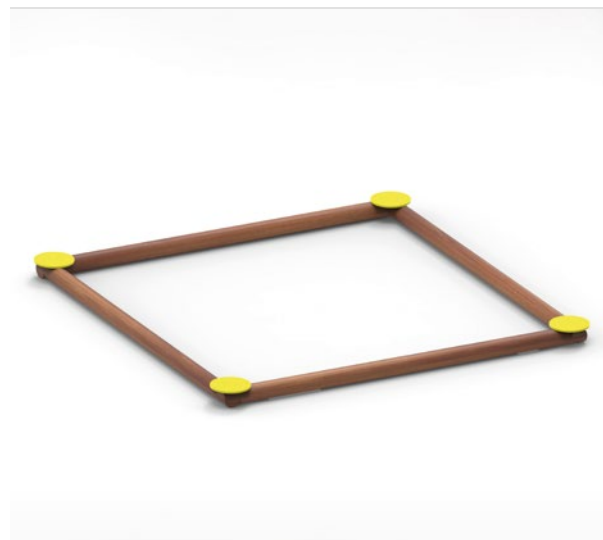
## HL-M-202301

### ROBBY seesaw

<b>Fall height</b>	0,99 m
<b>Equipment dimensions</b>	3000 × 490 mm
<b>Fall zone</b>	6000 × 3130 mm

#### Used materials

- sapwood milled, surface-treated acacia beams
- hot-dip galvanised steel shaft hardware
- eggshell seat: HDPE



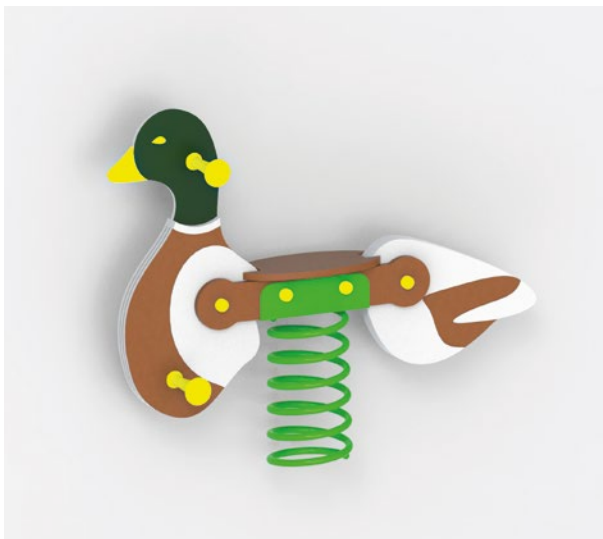
## HL-S-202301

### SANDY sandbox

<b>Fall height</b>	0,30 m
<b>Equipment dimensions</b>	3000 × 3000 mm
<b>Fall zone</b>	6000 × 6000 mm

#### Used materials

- sapwood milled, surface-treated acacia beams
- HDPE



## HL-R-202301

### HAPPY spring duck

<b>fall height</b>	0,49 m
<b>Equipment dimensions</b>	1146 × 375 mm
<b>fall zone</b>	4210 × 3053 mm

#### Used materials

- HDPE plastic sheets
- hot-dip galvanised, powder coated steel spring
- hot-dip galvanised steel ground frame



## HL-R-202302

### FOCI spring horse

<b>fall height</b>	0,49 m
<b>Equipment dimensions</b>	1146 × 375 mm
<b>fall zone</b>	4210 × 3053 mm

#### Used materials

- HDPE plastic sheets
- hot-dip galvanised, powder coated steel spring
- hot-dip galvanised steel ground frame

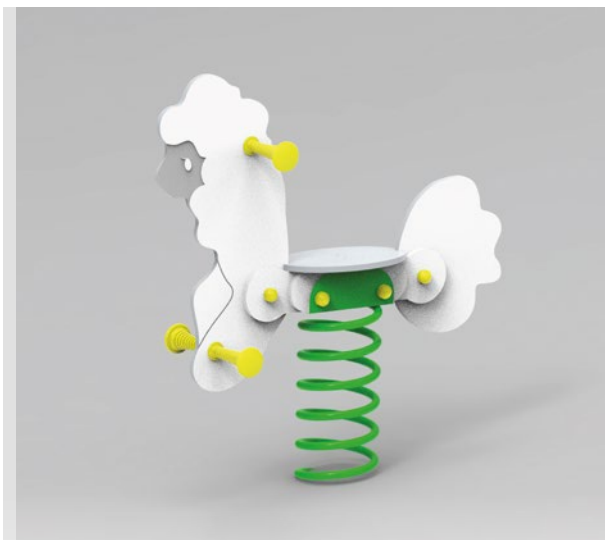


## HL-R-202303 Spring dog

<b>Fall height</b>	0,49 m
<b>Equipment dimensions</b>	1146 × 375 mm
<b>Fall zone</b>	4210 × 3053 mm

### Used materials

- HDPE plastic sheets
- hot-dip galvanised, powder coated steel spring
- hot-dip galvanised steel ground frame

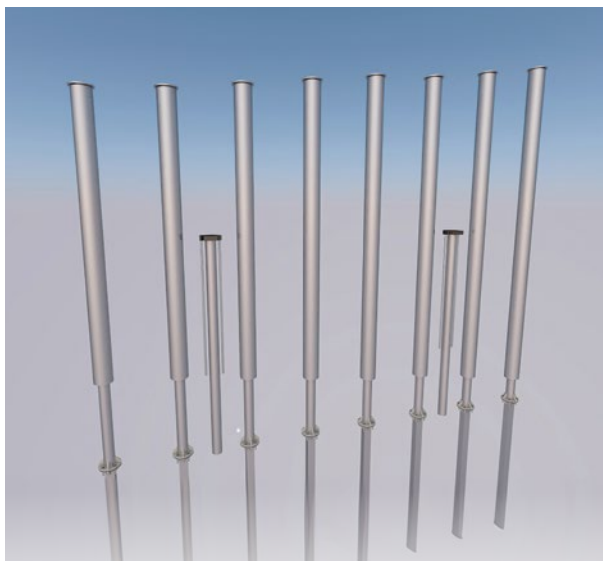


## HL-R-202304 Spring sheep

<b>Fall height</b>	0,49 m
<b>Equipment dimensions</b>	1146 × 375 mm
<b>Fall zone</b>	4210 × 3053 mm

### Used materials

- HDPE plastic sheets
- hot-dip galvanised, powder coated steel spring
- hot-dip galvanised steel ground frame

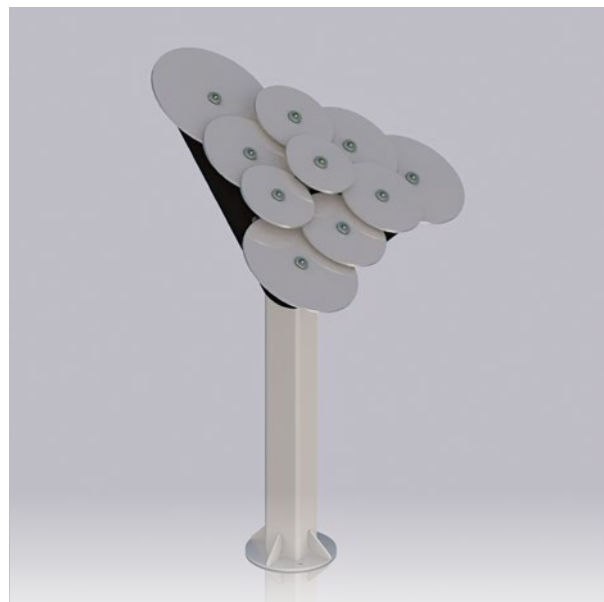


## HL-Z-202301 FARANG bells

**Equipment dimensions** 2110 × 380 × 2410 mm

### Structure

- Ø101,6 mm stainless steel pipe frame
- steel support column
- acoustically tuned elements
- anchored to the ground by a foundation



## HL-Z-202302 DONGGONG percussion instrument

**Equipment dimensions** 560 × 680 × 1140 mm

### Structure

- 9,5 × 9,5 cm glued-laminated, surface-treated wooden poles
- anchored to the ground by a foundation
- acoustically tuned steel cymbals

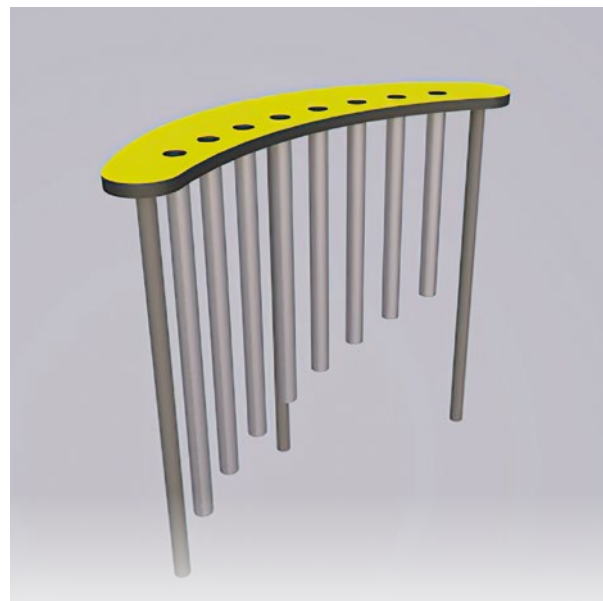


## HL-Z-202303 TILLA xilophone

**Equipment dimensions** 1200 × 100 × 2320 mm

### Structure

- Ø76 mm stainless steel pipe frame
- anchored to the ground by a foundation
- acoustically tuned elements

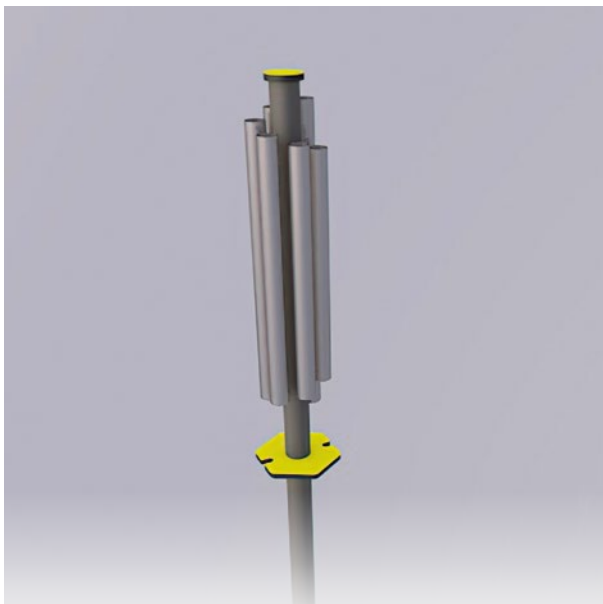


## HL-Z-202401 SLAPOPHONE chimes

**Equipment dimensions** 1160 x 400 x 950 mm

### Structure

- hot-dip galvanised, powder-coated steel support columns
- stainless steel vibrating tubes
- HDPE plastic tabletop

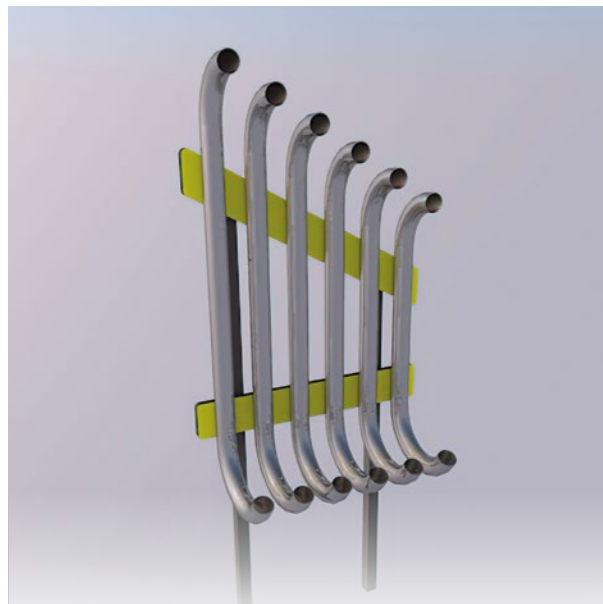


## HL-Z-202402 Columnar chimes

**Equipment dimensions** 210 × 0240 × 1620 mm

### Structure

- hot-dip galvanised, powder-coated steel support columns
- stainless steel vibrating tubes
- HDPE plastic tabletop



## HL-Z-202403 High slapophone

**Equipment dimensions** 1010 × 0540 × 2440 mm

### Structure

- hot-dip galvanised, powder-coated steel support columns
- stainless steel vibrating tubes
- HDPE plastic tabletop



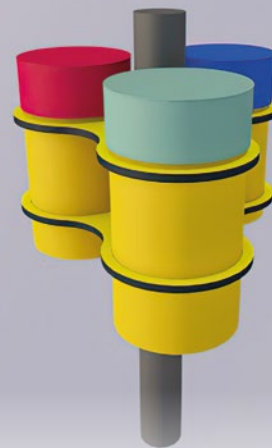


## HL-Z-202404 Talk tubes

**Equipment dimensions** 2 × 610 × 300 × 1300 mm

### Konstruktion

- stainless steel frame

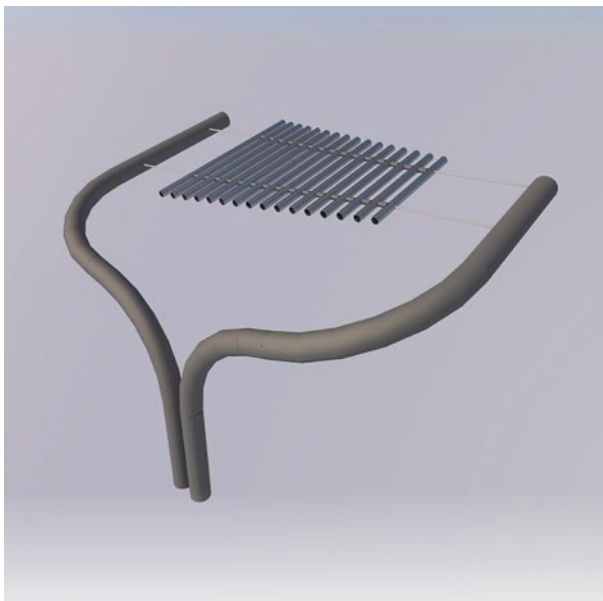


## HL-Z-202405 Drums

**Equipment dimensions** 610 × 540 × 1000 mm

### Structure

- hot-dip galvanised, powder-coated steel support columns
- stainless steel vibrating tubes
- HDPE plastic tabletop

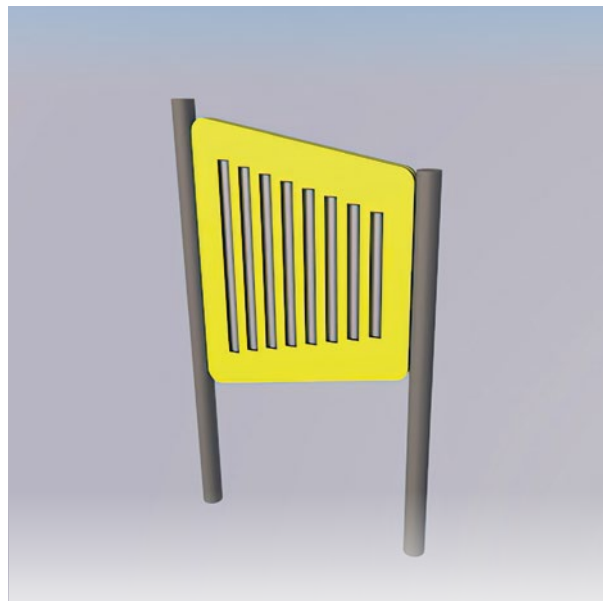


## HL-Z-202406 Xilophone

**Equipment dimensions** 1730 × 1100 × 1240 mm

### Structure

- hot-dip galvanised, powder-coated steel support columns
- stainless steel vibrating tubes



## HL-Z-202407 Small chimes

**Equipment dimensions** 960 × 80 × 1600 mm

### Structure

- hot-dip galvanised, powder-coated steel support columns
- stainless steel vibrating tubes
- HDPE plastic tabletop







## FADOKTOR MÉRNÖKI IRODA KFT.

- 📍 Location: 76. Csalánkerti str., Sopron, H-9407
- 📍 Office: 2. Lakatos István str., Sopron, H-9400, ITC Inkubátorház
- ☎️ +36-30/2167-692
- ✉️ [info@fadoktor-mi.hu](mailto:info@fadoktor-mi.hu)
- 🌐 [www.fadoktor-mi.hu](http://www.fadoktor-mi.hu)